


## Equator Overdenture Abutments

Overdenture abutments are used to stabilise an overdenture with implants.

**EXTERNAL HEX Range**


EQ-IP      EQ-IBN      EQ-IB



EQ-IP-2	EQ-IBN-2	EQ-IB-2
EQ-IP-4	EQ-IBN-4	EQ-IB-4
EQ-IP-6	EQ-IBN-6	EQ-IB-6

**INTERNAL HEX Range**  
(PROVATA™ / M-Series)


EQ-M



EQ-M-2
EQ-M-4
EQ-M-6


**DC (Deep Conical) Range**

EQ-DC4




EQ-DC3-2	EQ-DC4-2	EQ-DC5-2
EQ-DC3-4	EQ-DC4-4	EQ-DC5-4
EQ-DC3-6	EQ-DC4-6	EQ-DC5-6

**TRI-NEX Range**



Ø3.5	Ø4.3	Ø5.0
Z-EQ-131TN351	Z-EQ-131TN431	Z-EQ-131TN51
Z-EQ-131TN352	Z-EQ-131TN432	Z-EQ-131TN52
Z-EQ-131TN353	Z-EQ-131TN433	Z-EQ-131TN53
Z-EQ-131TN354	Z-EQ-131TN434	Z-EQ-131TN54
Z-EQ-131TN355	Z-EQ-131TN435	Z-EQ-131TN55
Z-EQ-131TN356	Z-EQ-131TN436	Z-EQ-131TN56
Z-EQ-131TN357	Z-EQ-131TN437	Z-EQ-131TN57

**IT (Internal Octagon) Range**



Ø4.8
Z-EQ-131IT481
Z-EQ-131IT482
Z-EQ-131IT483

## PROSTHETIC WORKFLOW



Select the Equator abutment with the appropriate cuff height.  
Screw the Equator abutment with a maximum torque of 25Ncm into the implant.

Images are for illustration purposes only and do not necessarily accurately represent the product. Not all products are cleared for sale in all countries.

[SOUTHERNIMPLANTS.COM](http://SOUTHERNIMPLANTS.COM)

# Equator Overdenture Abutments

## PROCESSING AID

Z-EQ-100PD  
(Protective Disks)



## INSTRUMENTS

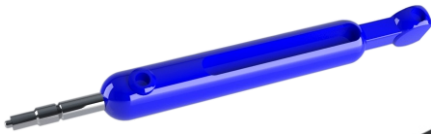
Z-I-EQ25  
EQ ABUTMENT 1.25mm DRIVER



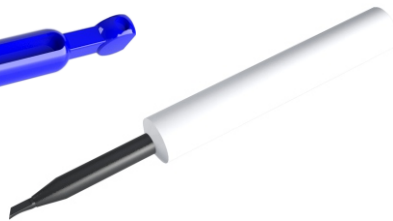
Z-I-HEQ-25  
1.25mm HANDPIECE DRIVER



INSTRUMENT KIT (2 piece)  
Z-I-KIT-EQ

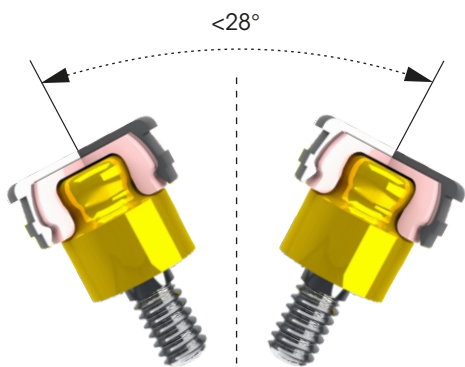


Cap Insertion Tool

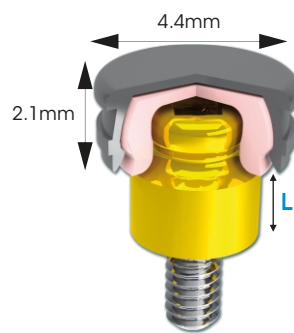


Cap Extractor Tool

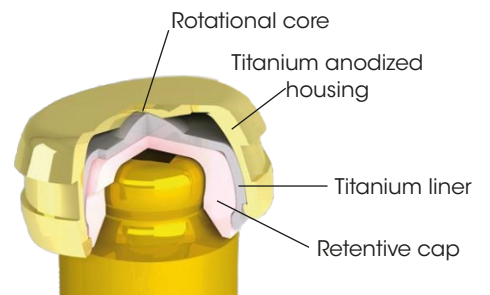
## DEGREE OF DIVERGENCE



## DIMENSIONS



Z-EQ-RC6



Z-EQ-sBOX