



SOUTHERNIMPLANTS®

Innovative Treatment Solutions

TOP Abutment



Unlock exceptional healing



TOPOGRAPHICAL

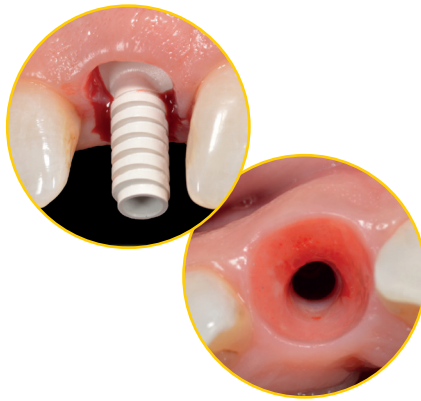
Abutments

Deep Retention Grooves

Deep grooves for crown retention.

Optimal Tissue Profile

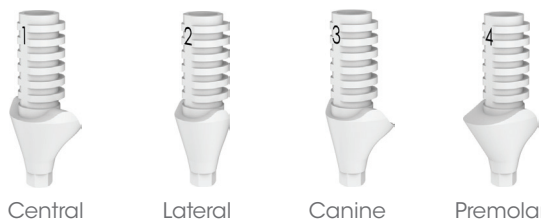
Anatomically shaped to match the topographical shape of the tooth leading to ideal soft tissue management for anterior sites.



Assists with creating Guided Tissue Healing (GTH) which has been shown to provide optimal results in ridge contour preservation.¹

4 Variations

With 4 different shape profiles to match different sites.

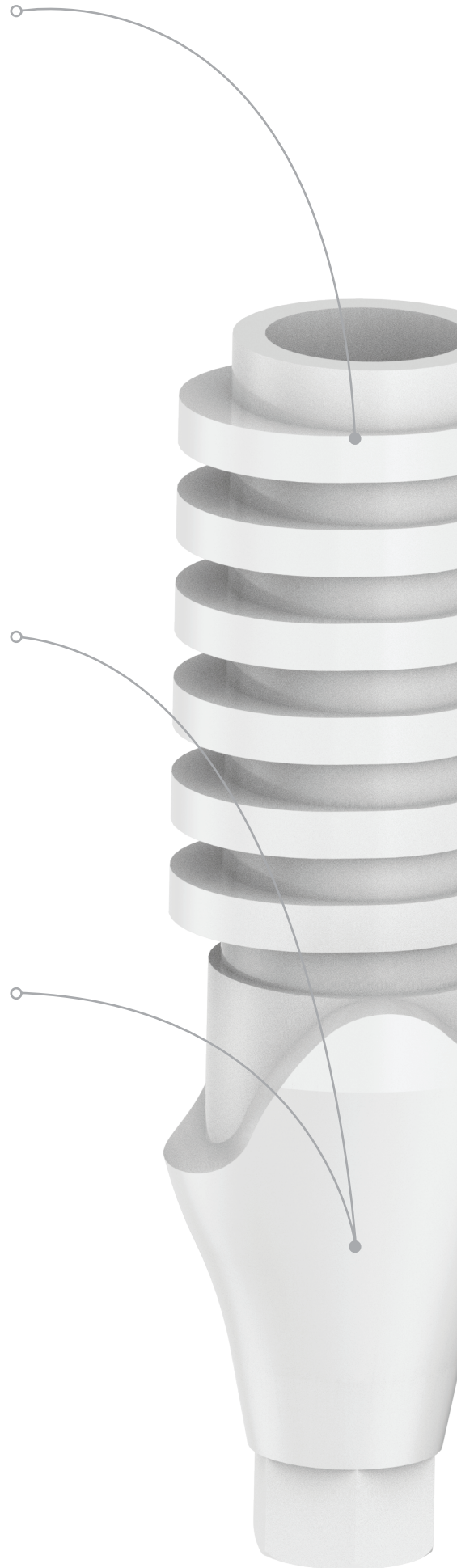


Also available in healing abutments.

Save Time

Saving time in provisional restoration fabrication.
Easier to perform chair-side modifications.

Soft tissue preservation at the time of tooth removal is paramount to the long-term success of the treatment.¹



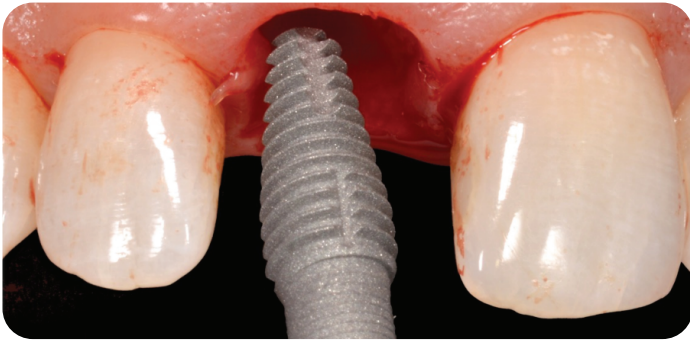
Time-Saving Solution

A PEEK abutment solution for making simple and time-saving chairside provisionals with premanufactured emergence profiles for optimal tissue contouring.

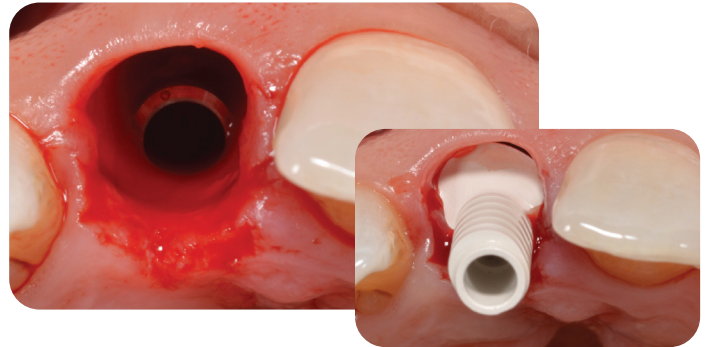


Clinical Treatment By: **Dr Dennis Tarnow** DDS (USA) and **Dr Stephen J. Chu** DMD, MSD, CDT (USA)

PEEK abutments that have a scalloped profile to match tissue contours, that is ideal for anterior sites. It is simple and time efficient provisionals for immediate placement.



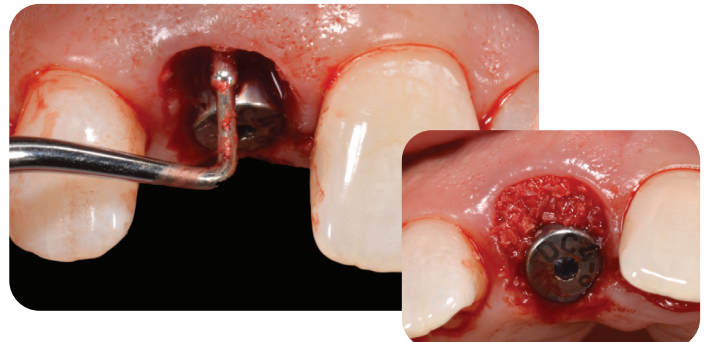
1. A Deep Conical Co-Axis® INVERTA® implant is placed into the extraction site by Dr Dennis Tarnow. The implant design enables high primary stability to be gained in an extraction site whilst exerting no pressure on the thin buccal plate.



2. To maintain the ideal submergence profile of the peri-implant soft tissues, the new central incisor TOP abutment was selected. The preformed scalloped profile enables optimal soft tissue shape for the correct crown contour.



3. An acrylic or composite resin material is shaped around the TOP abutment to form a provisional crown. Additional material is added to the voids. The crown is polished to match the desired shape.



4. Dual-zone grafting is a technique used to enhance the aesthetics and stability of the final restoration. This helps to ensure that both the implant and surrounding gums have sufficient support and volume.









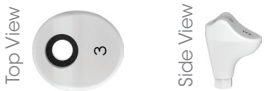

5. The TOP abutment combined with the INVERTA® implant results in optimal soft tissue contouring making it ideal for consistent results in peri-implant soft tissue preservation.








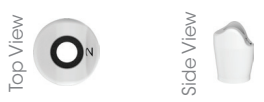


6. The final prosthesis is designed and delivered to match the contour provided by the TOP abutment resulting in optimal aesthetic results.

TOP Abutment Range

DEEP CONICAL (DC)

	Centrals	Laterals	Canines	Premolars
TOP Abutments				
	-	PKR-TOP2-DC3	-	-
	PKR-TOP1-DC4	PKR-TOP2-DC4	PKR-TOP3-DC4	PKR-TOP4-DC4
	-	-	PKR-TOP3-DC5	PKR-TOP4-DC5
Healing Abutments				
	-	HA-PKR2-DC3	-	-
	HA-PKR1-DC4	HA-PKR2-DC4	HA-PKR3-DC4	HA-PKR4-DC4
	-	-	HA-PKR3-DC5	HA-PKR4-DC5

EXTERNAL HEX

	Centrals	Laterals	Canines	Premolars
TOP Abutments				
	-	PKR-TOP2-EX-30	-	-
	PKR-TOP1-EX-34	PKR-TOP2-EX-34	PKR-TOP3-EX-34	PKR-TOP4-EX-34
	-	-	PKR-TOP3-EX-40	PKR-TOP4-EX-40
Healing Abutments				
	-	HA-PKR2-EX-30	-	-
	HA-PKR1-EX-34	HA-PKR2-EX-34	HA-PKR3-EX-34	HA-PKR4-EX-34
	-	-	HA-PKR3-EX-40	HA-PKR4-EX-40

NOTE: healing abutments packaged with retaining screw.

References

1. Crespi, R., Tofi, P., Covani, U., Crespi, G., Brevi, B.C. and GB, M.F., 2023. Preformed customized healing abutments in biologically oriented preparation technique procedure: a 3-year retrospective case-control study. *International Journal of Computerized. Dentistry*, pp.0-0.

For more information
scan the below



or contact your Southern Implants Representative
or visit southernimplants.com



South Africa - Headquarters 1 Albert Road, Irene, RSA
T: +27-12-667-1046 | E: info@southernimplants.com

EC REP

Southern Implants Europe AB Holmgatan 30, S-791 71, Falun, Sweden
E: ecrep@southernimplants.com

Subsidiaries

Australia
Southern Implants Australia
T: +61-2-8076-9337
E: info@southernimplants.com.au

Spain and Portugal
Southern Implants Ibérica
T: +34 935 053 507
E: info@southernimplants.com.es

United Kingdom and Ireland
Southern Implants UK
T: +44-20-8899-6845 / 6 / 7
E: info@southernimplants.com.uk

USA and Canada
Southern Implants North America Inc.
T: +1-561-472-0990
E: customercare@southernimplants.com

Southern Implants® are distributed world-wide, please visit southernimplants.com for a list of Distributors.
For the latest and full assortment of Southern Implant products, visit our current resources library at southernimplants.com.

CAT-6023-01